

> Controller

Regulation of digital quantization, more convenient operation. This module receiving human detection signal from the sensor, the drive motor, control the motion of the door, the power supply can be applied to 220 volts, no transformer.

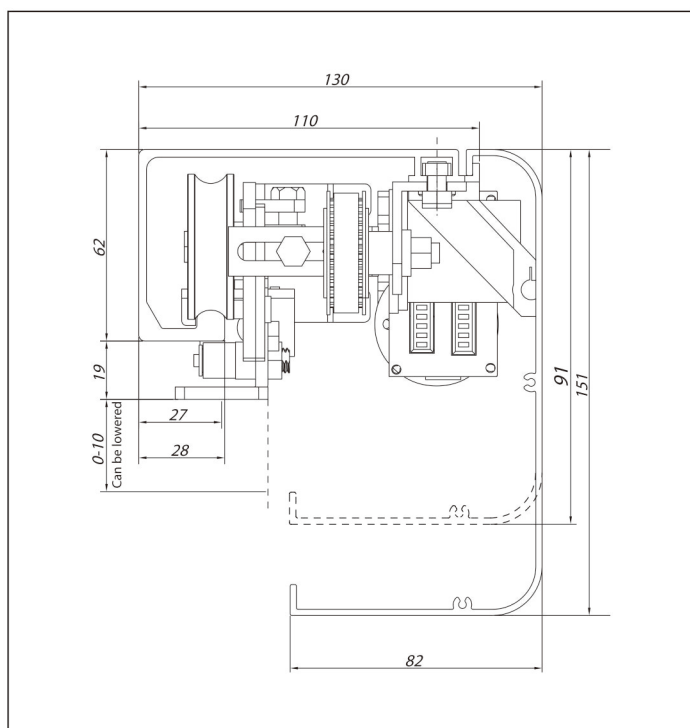
> Motor and transmission device

Made of high hardness aluminum, can simply cut off, all the opening width can be adjusted, install with the optimum size.

> Hanger Group

This module is provided with a door wheel, it can move in the engine case aluminum guide, has strong bearing capacity.

Installation dimensions



Technical Parameters

Horizontal pull	Single Door	Double Doors
Leaf weight	≤ 100kg	≤ 80 * 2kg
Width of door	700 ~ 1300mm	600 ~ 1250mm
Controller	High-performance micro-controller	High-performance micro-controller
Motor	DC 24V 45W brushless motor	DC 24V 45W brushless motor
Opening speed	≤ 400mm / s (adjustable)	≤ 400mm / s (adjustable)
Closing speed	≤ 300mm / s (adjustable)	≤ 300mm / s (adjustable)
Door hold time	0.5 ~ 10s (adjustable)	0.5~10 s (adjustable)
Manual thrust	≤ 45N	≤ 45N
Opening direction	Optional	Optional
Supply Voltage	AC85V~AC265V 50Hz ~ 60Hz	AC85V~AC265V 50Hz ~ 60Hz
Temperature	-20 ~ 50 C	-20 ~ 50 C
Humidity	35 ~ 85% RH (non-condensing)	35 ~ 85% RH (non-condensing)
Extensions	Safety light eyes, such as remote control of various types of access control	